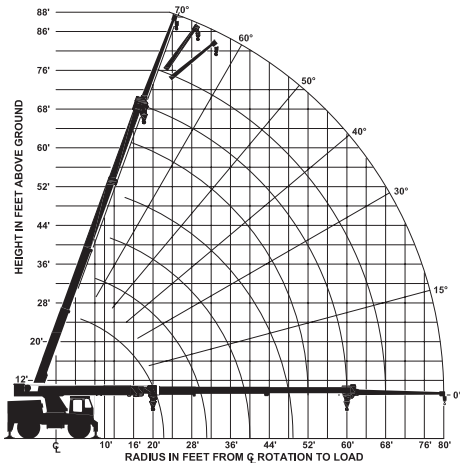
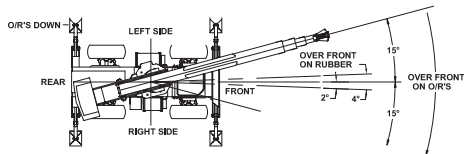


Crane Capacity Chart: Imperial



Load hooks, downhaul weights, hook blocks and other load handling devices except hoist rope shall be considered part of the load.



The booms on this unit are all steel and have no line voltage rating - no electrical insulation value.

Boom extension deduct: 500lbs when stowed on base boom

Ensure anti-two-block switch is functional after deploying or stowing boom extension.

CAPACITIES APPLY TO OPERATION ON FIRM LEVEL SURFACE							
LOAD RADIUS FEET	MAIN BOOM OR EXTENSION CAPACITIES IN POUNDS						
	360° ROTATION		OVER FRONT				
	ON RUBBER	ON OUTRIGGERS	ON RUBBER	ON OUTRIGGERS			
10	18300	30000	26300	30000			
12	13500	28500	22500	28500			
14	10400	25900	17600	25900			
16	8300	22500	14000	22500			
18	6700	19500	11400	19500			
20	5500	16900	9400	17000			
22	4500	14200	7900	15000			
24	3700	12100	6800	13300			
26	3100	10500	5700	11900			
28	2500	9100	4800	10600			
30	2000	7900	4200	9600			
32	1600	6900	3600	8600			
34	1400	6300	3200	8000			
36	1200	5700	2900	7500			
38	900	5200	2600	6900			
40	800	4800	2400	6500			
44	600	4100	1900	5600			
48	---	3500	1600	4900			
52	---	3100	1300	4200			
56	---	2700	1000	3700			
60	---	2300	800	3200			
64	---	1950	---	2300			
68	---	1750	---	2300			
72	---	1500	---	2250			
76	---	1300	---	1950			
80	---	1000	---	1600			
20-FOOT BOOM EXTENSION CAPACITIES							
MAIN BOOM ANGLE							
ANGLE	0°	15°	30°	40°	50°	60°	70°
0°	2300	2400	2700	3100	3700	4800	6200
15°	---	2300	2400	2600	2900	3400	4100
30°	---	---	2300	2400	2500	2700	3100

Operation:

1. Read and understand owners manual before operating this crane.
2. Check level of engine oil and hydraulic oil daily.
3. Check unit for visible defects loose parts daily.
4. Set vehicle parking brake securely.
5. Extend outriggers to solid footing and level crane.
6. Operate all hydraulic controls slowly and smoothly. Avoid sudden stops and starts.

The load hoist line on this unit must be 9/16" dia. 6X36-EIP-RRL-IWRC wire rope (or equivalent) with a minimum breaking strength of 33,600 lbs. Approved tires: 17.5-25 20 PR - 100 PSI

Torque wheel nuts to 475 ft. Lbs. Nm (these conditions must be maintained to handle rated loads on this crane.)

RT-300-G Rough Terrain Crane

LOAD RADIUS IS THE HORIZONTAL DISTANCE FROM THE CENTER OF ROTATION OF THE UNLOADED CRANE TO THE VERTICAL LOAD LINE WITH THE LOAD APPLIED.

CAPACITIES ON OUTRIGGERS OUT & DOWN ARE 85% OF TIPPING LOADS. CAPACITIES ON RUBBER ARE 75% OF TIPPING LOADS. CAPACITIES ON IN & DOWN OUTRIGGERS ARE LESS THAN 85% OF TIPPING LOADS. CAPACITIES BELOW BOLD LINE ARE LIMITED BY TIPPING. OTHER CAPACITIES ARE LIMITED BY STRUCTURAL OR HYDRAULIC CAPABILITY. MAX HYDRAULIC PRESSURE - 3,000 PSI.

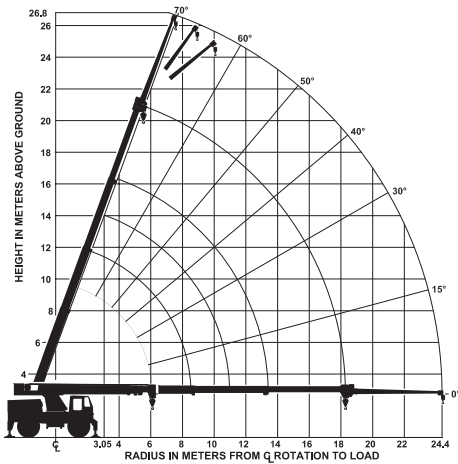
PICK AND CARRY WITH THE SHORTEST PRACTICAL BOOM, CENTERED OVER THE FRONT. OPERATE WITH BOOM AS LOW AS POSSIBLE, WITH THE LOAD CLOSE TO THE GROUND. PICK AND CARRY CAPACITIES ARE FOR SMOOTH, LEVEL PAVED SURFACE. FOR UNPAVED SURFACE, REDUCE CAPACITY BY AT LEAST 25% - SPEED MUST BE LESS THAN 3MPH.

DO NOT POSITION BOOM AT LOAD RADII WHERE NO LOAD CAPACITIES ARE SHOWN.

EXCEEDING CAPACITY RATINGS OR APPLYING SIDE LOADS TO THE BOOM OR BOOM EXTENSION IS MISUSE, HAZARDOUS, AND VOIDS WARRANTY.

CAUTION: BOOM EXTENSION LOAD MUST NOT EXCEED MAIN BOOM CAPACITY. DO NOT PICK AND CARRY WITH LOADS ON BOOM EXTENSION.

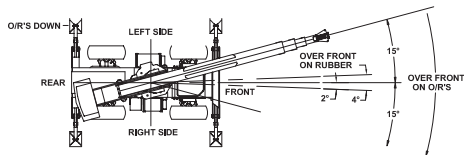
Crane Capacity Chart: Metric



USE SINGLE PART LOAD LINE FOR LOADS TO 3400 kg

USE FOUR PART LOAD LINE FOR LOADS TO 13600 kg

Load hooks, downhaul weights, hook blocks and other load handling devices except hoist rope shall be considered part of the load.



The booms on this unit are all steel and have no line voltage rating - no electrical insulation value.

Boom extension deduct: 230 kg. when stowed on base boom

Ensure anti-two-block switch is functional after deploying or stowing boom extension.

CAPACITIES APPLY TO OPERATION ON FIRM LEVEL SURFACE								
LOAD RADIUS METERS	MAIN BOOM OR EXTENSION CAPACITIES IN KILOGRAMS							
	360° ROTATION		OVER FRONT					
	ON RUBBER	ON OUTRIGGERS	ON RUBBER	ON OUTRIGGERS				
3.05	8300	13600	11900	13600				
3.5	6540	13160	10700	13160				
4	5310	12290	8940	12290				
4.5	4320	11160	7290	11160				
5	3600	9920	6080	9920				
5.5	3020	8820	5150	8820				
6	2570	7850	4390	7870				
7	1850	5930	3340	6410				
8	1370	4680	2520	5320				
9	960	3700	1970	4460				
10	690	3020	1540	3770				
11	540	2570	1310	3390				
12	370	2230	1120	3000				
13	300	1960	930	2670				
13.41	270	1860	860	2540				
14	---	1720	790	2380				
15	---	1530	680	2120				
16	---	1380	570	1870				
17	---	1230	460	1690				
18	---	1080	380	1500				
18.29	---	1040	360	1450				
19	---	940	---	1190				
20	---	840	---	1040				
22	---	670	---	1010				
24	---	500	---	770				
24.38	---	450	---	720				
6.1 METER BOOM EXTENSION CAPACITIES								
BOOM EXTENSION ANGLE	MAIN BOOM ANGLE							
	0°	15°	30°	40°	50°	60°	70°	
	0°	1040	1090	1220	1400	1680	2170	2810
	15°	---	1040	1090	1180	1310	1540	1860
30°	---	---	1040	1090	1130	1220	1400	

Operation:

1. Read and understand owners manual before operating this crane.
2. Check level of engine oil and hydraulic oil daily.
3. Check unit for visible defects loose parts daily.
4. Set vehicle parking brake securely.
5. Extend outriggers to solid footing and level crane.
6. Operate all hydraulic controls slowly and smoothly. Avoid sudden stops and starts.

The load hoist line on this unit must be 14mm dia. 6X36-EIP-RRL-IWRC wire rope (or equivalent) with a minimum breaking strength of 149 KN. Approved tires: 17.5-25 20 PR - 690 KPA

Torque wheel nuts to 645 Nm (these conditions must be maintained to handle rated loads on this crane.)

RT-300-G Rough Terrain Crane

LOAD RADIUS IS THE HORIZONTAL DISTANCE FROM THE CENTER OF ROTATION OF THE UNLOADED CRANE TO THE VERTICAL LOAD LINE WITH THE LOAD APPLIED.

CAPACITIES ON OUTRIGGERS OUT & DOWN ARE 85% OF TIPPING LOADS. CAPACITIES ON RUBBER ARE 75% OF TIPPING LOADS. CAPACITIES ON IN & DOWN OUTRIGGERS ARE LESS THAN 85% OF TIPPING LOADS. CAPACITIES BELOW BOLD LINE ARE LIMITED BY TIPPING. OTHER CAPACITIES ARE LIMITED BY STRUCTURAL OR HYDRAULIC CAPABILITY. MAX HYDRAULIC PRESSURE - 270 BAR.

PICK AND CARRY WITH THE SHORTEST PRACTICAL BOOM, CENTERED OVER THE FRONT. OPERATE WITH BOOM AS LOW AS POSSIBLE, WITH THE LOAD CLOSE TO THE GROUND. PICK AND CARRY CAPACITIES ARE FOR SMOOTH, LEVEL PAVED SURFACE. FOR UNPAVED SURFACE, REDUCE CAPACITY BY AT LEAST 25% - SPEED MUST BE LESS THAN 5 KM/H.

DO NOT POSITION BOOM AT LOAD RADII WHERE NO LOAD CAPACITIES ARE SHOWN.

EXCEEDING CAPACITY RATINGS OR APPLYING SIDE LOADS TO THE BOOM OR BOOM EXTENSION IS MISUSE, HAZARDOUS, AND VOIDS WARRANTY.